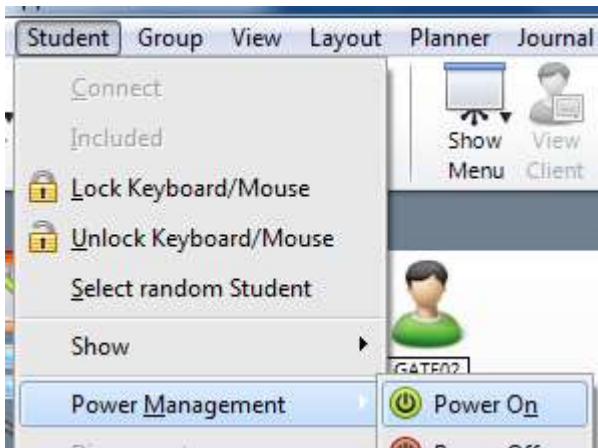


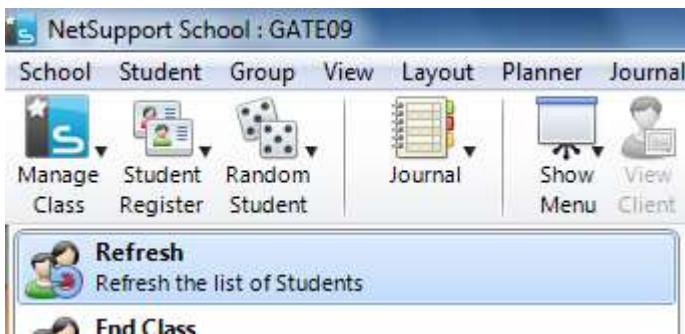
Power on the PCs in the cluster

Student -> Power Management -> Power On



Wait for 10-20 seconds then Refresh the class to connect to available PCs

Manage Class -> Refresh



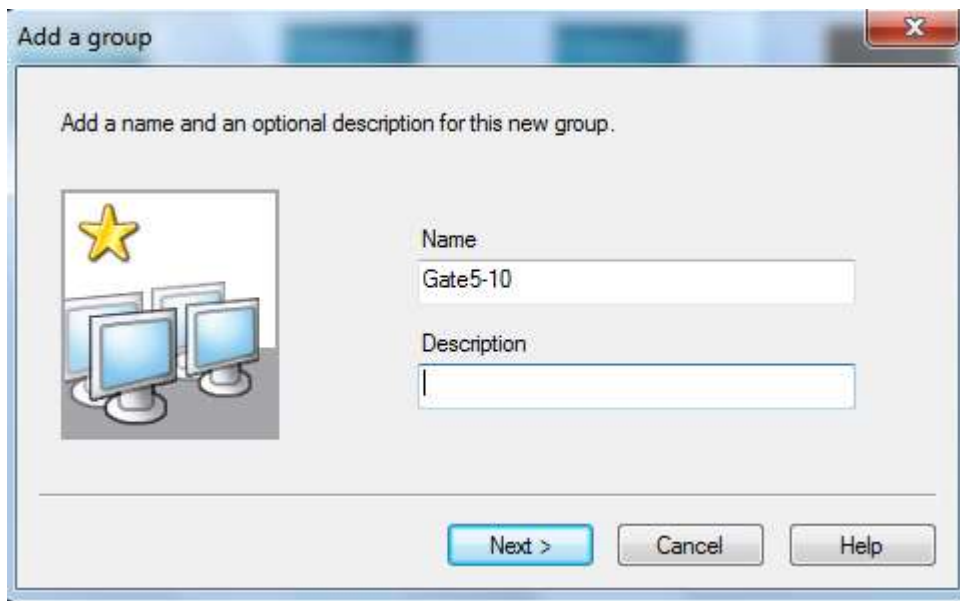
Optional - create a group

Select the PCs you would like to communicate with in your session



Click Group -> New



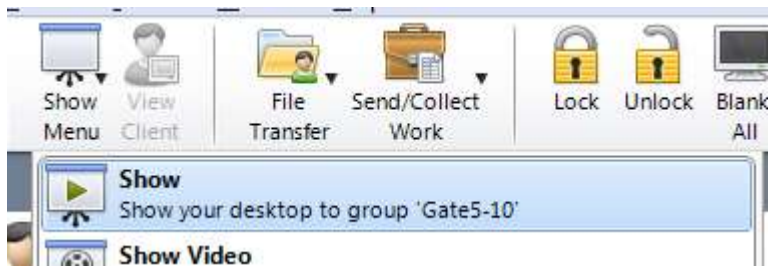


Your new group appears as a Tab, click on this to focus it:



Show your desktop to these PCs

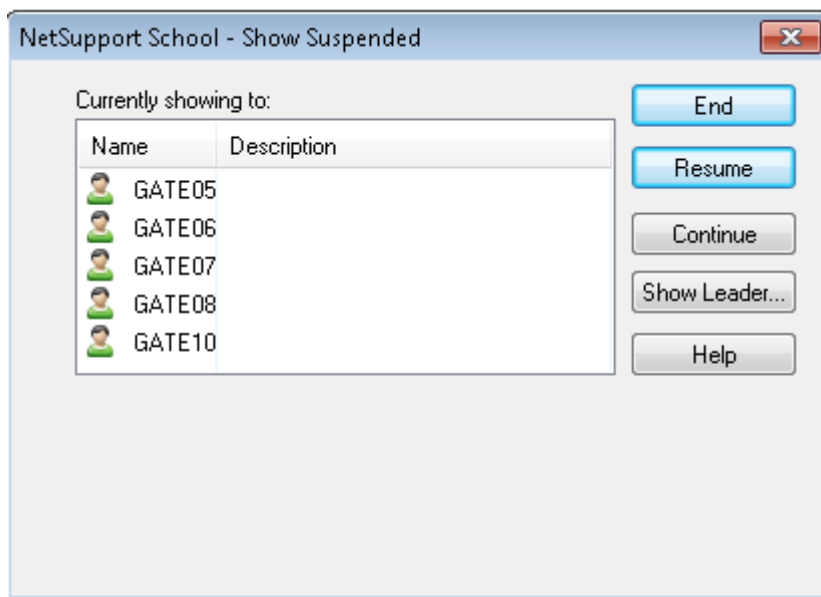
(note: they don't have to be logged on)



The show starts. Near your system tray you should see:



Double click this button to suspend and stop the show:



Check Progress

If you have given your group a task to complete you may wish to check how they are getting on.

On the left hand side click the "Monitor Student Machines" icon



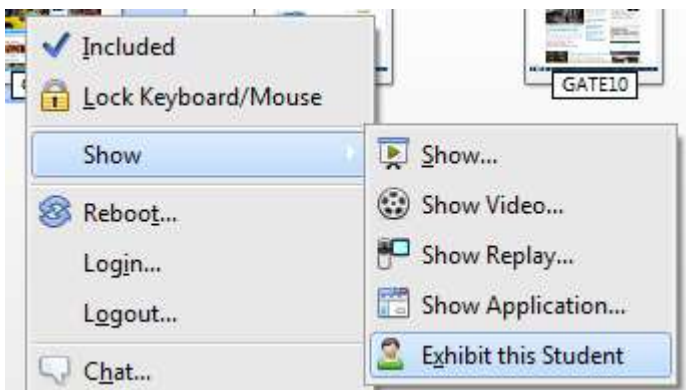
Hover the mouse over one of these to get a larger view e.g. over Gate07.



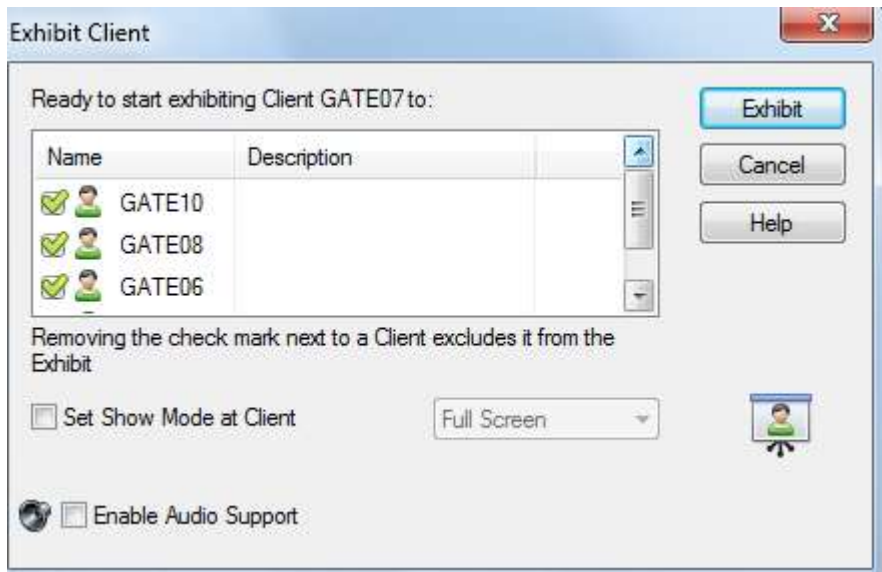
Exhibit a machine

Let's imagine that Gate07 had done some really good work and we wanted to show it to the class:

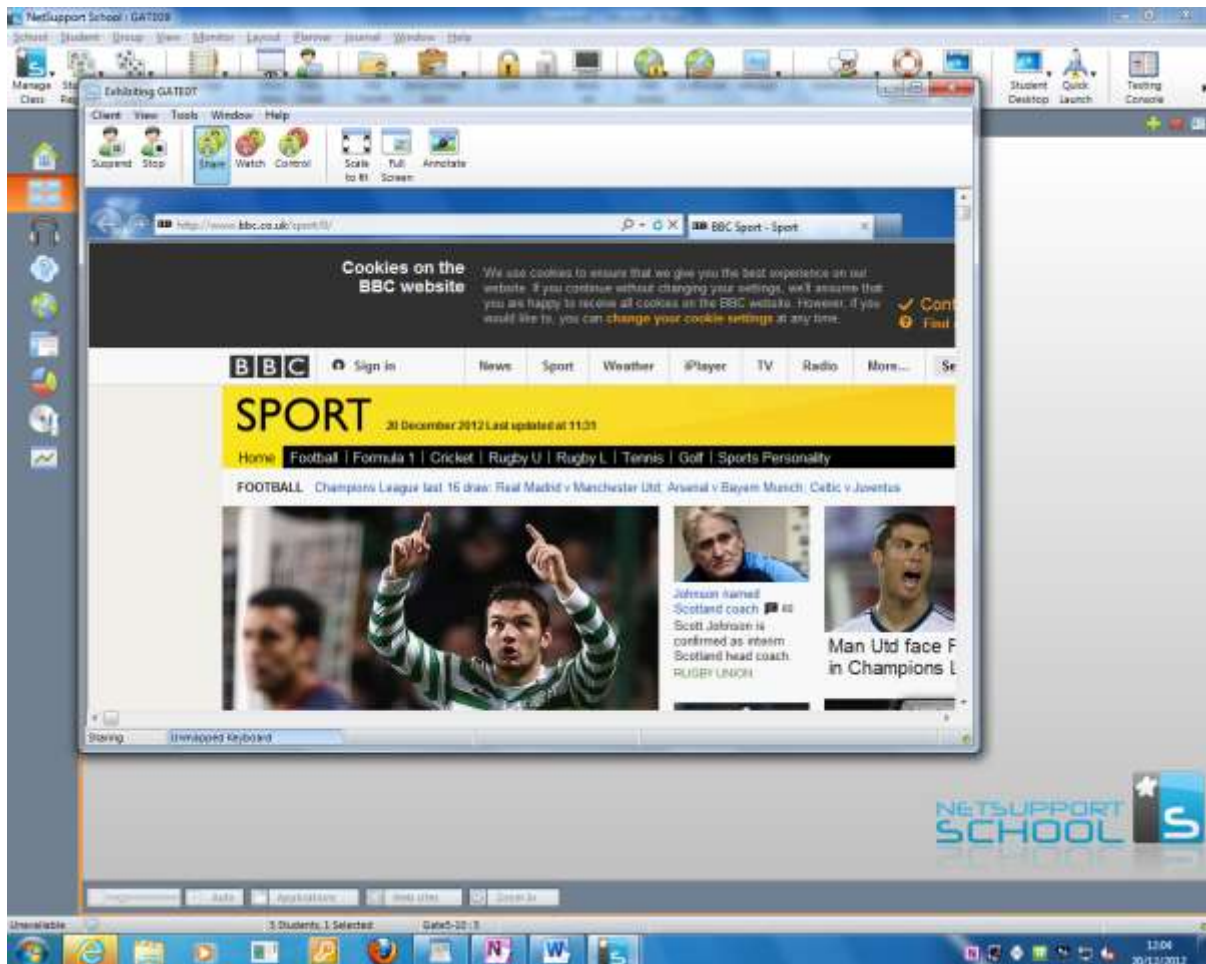
Right Click on the Gate07, select **Show** then **Exhibit this Student**



Then click **Exhibit**



The contents of Gate07 are sent to the other PCs in the group. On the tutor console you see:

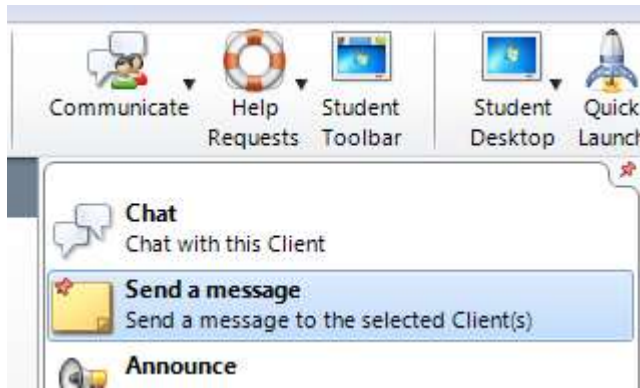


At the end of the discourse you can stop the show by clicking **Stop**

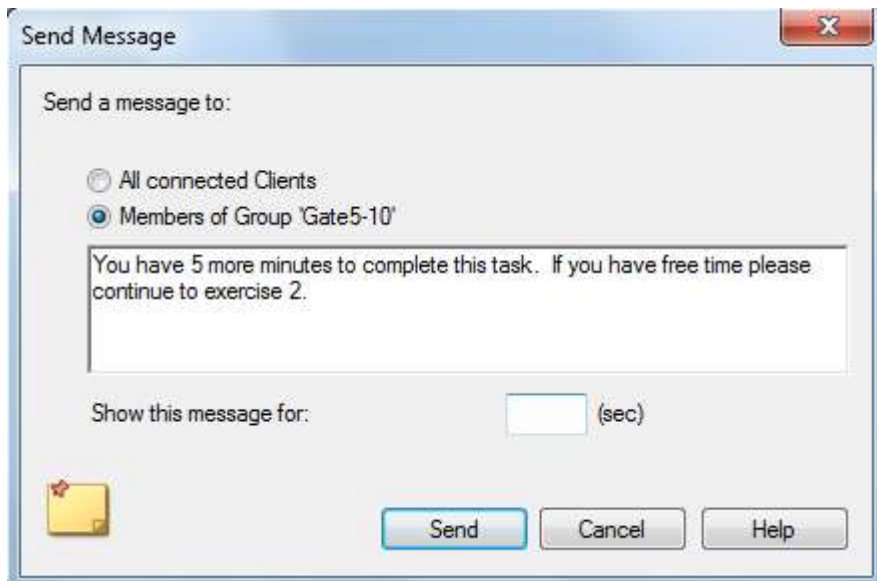


Send a message to the class

From the **Communicate** Tool choose **Send a message**

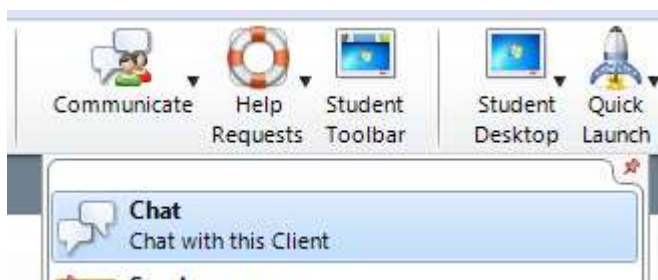


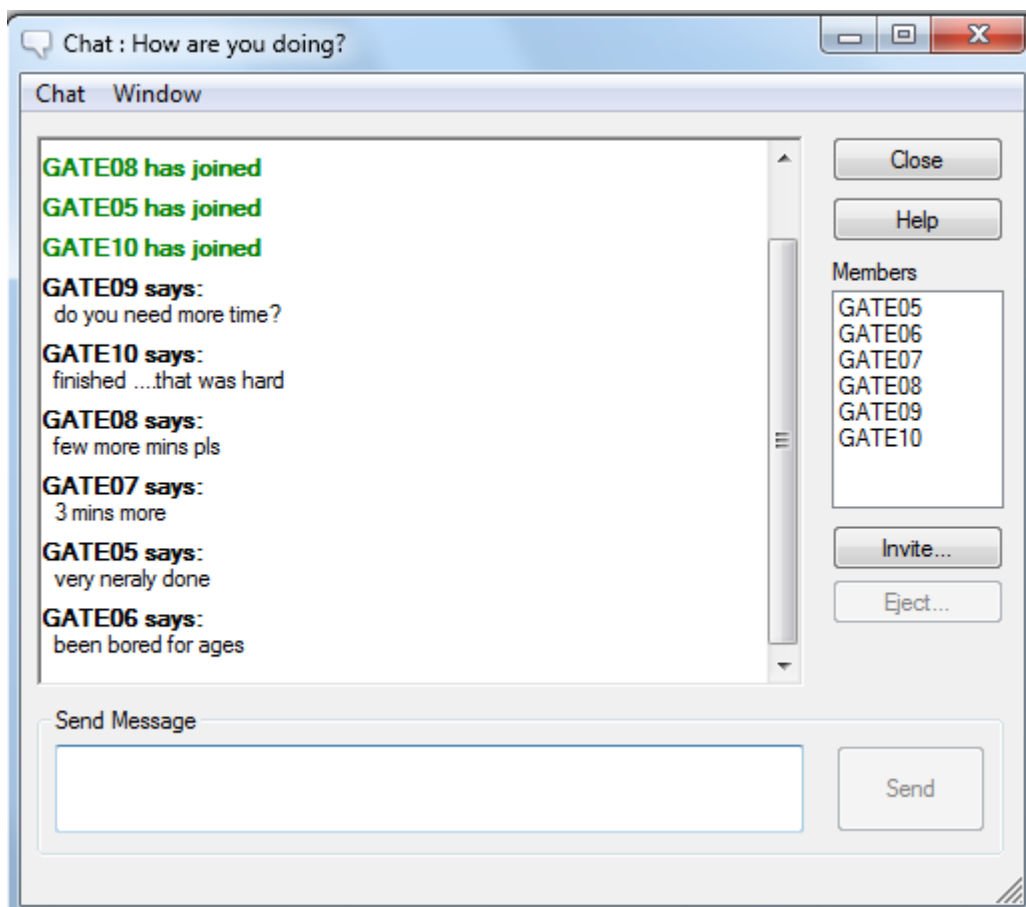
...and send a message eg:



Chat

From **Communicate** choose **Chat**



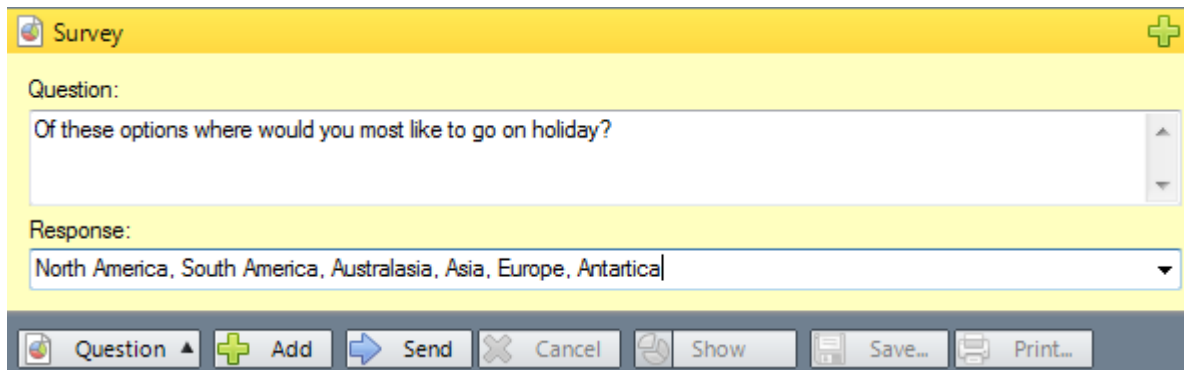


Ask a Question/Survey

On the Left hand side click **manage student surveys**



Type a question in the yellow survey box e.g.[In this example we are typing in options separated by commas]



Survey

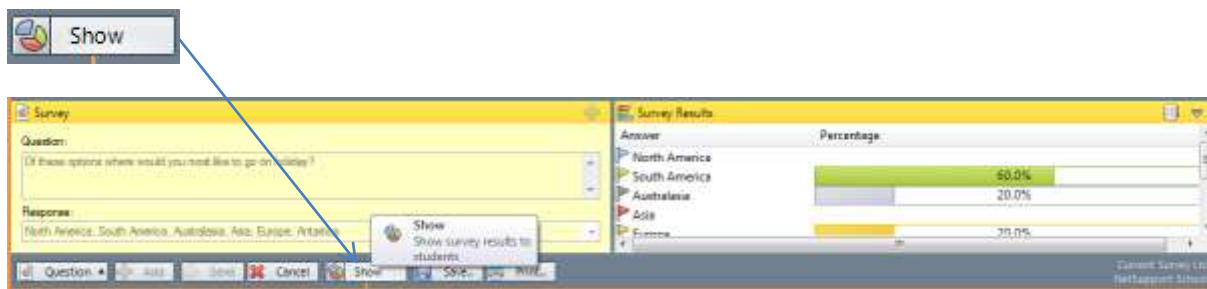
Question:
Of these options where would you most like to go on holiday?

Response:
North America, South America, Australasia, Asia, Europe, Antarctica

Question Add Send Cancel Show Save... Print...

Click the send button to send the question

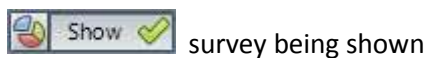
Wait for the responses to come in. Then click the **Show** button to show the results.



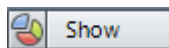
The PCs in the group see:



The students can clear the survey from their screen by clicking OK. You can also clear it by clicking the Show button again.



survey being shown



survey turned off

Co-browse

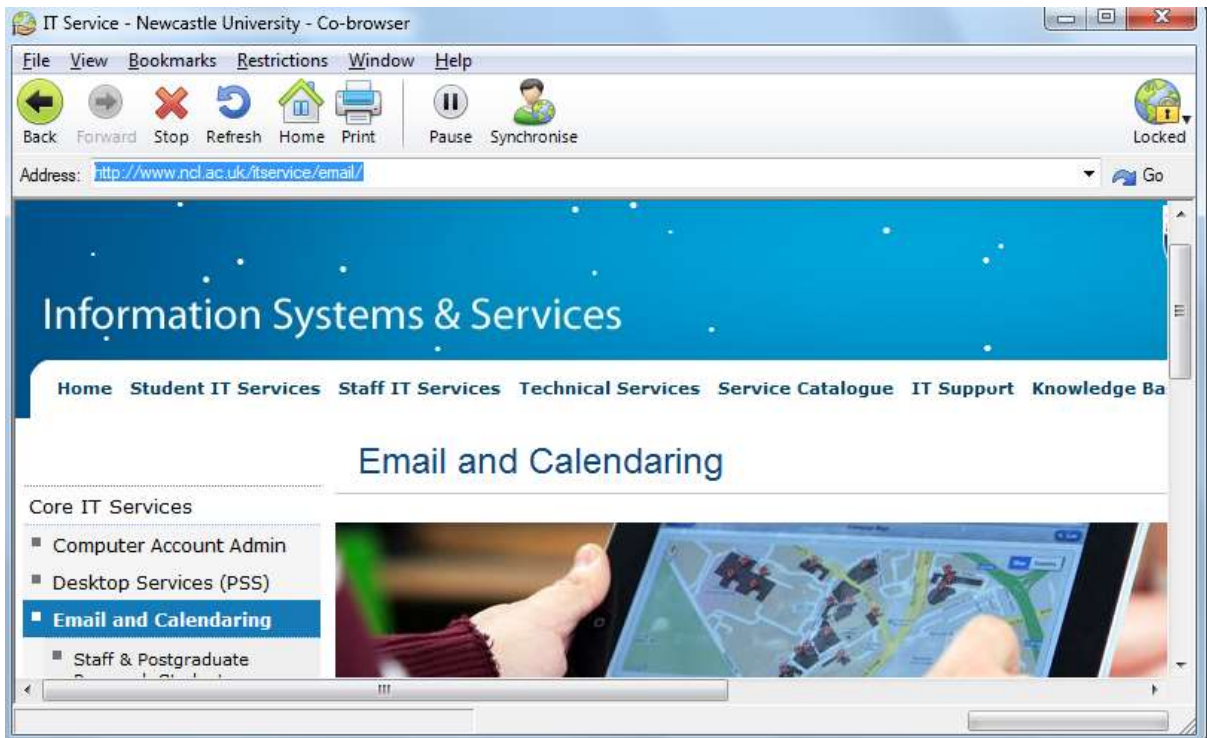
Co-browse launches a browser window on each PC and allows you to direct the class to a specific location, then allow them to explore from that point.



Click the co-browse tool

Allow 10-12 seconds for this to load

The tool on the right hand side shows that students are currently locked (following your lead)



You can free them up by clicking this tool:



To regain control reverse this:



When students are locked you can also pause then synchronise screens (say you wanted to check something out before showing it)